



**Bilbao**  
PORT

**YOUR BREAKBULK  
PARTNER WITH A DYNAMIC  
INDUSTRIAL HINTERLAND**

**MULTIPURPOSE FACILITIES & SKILLED  
TEAM TO SERVE A STRONG INDUSTRIAL  
HINTERLAND**



## ATLANTIC PORT AND INTERMODALITY

## IN THE EUROPEAN ATLANTIC CORRIDOR

The Port of Bilbao is located in the centre of the European Atlantic Corridor, equidistant from Brest and Finisterre. Its location provides an excellent link between the countries of America and the north of Europe, and its range of maritime services connects it with over 900 ports around the world.

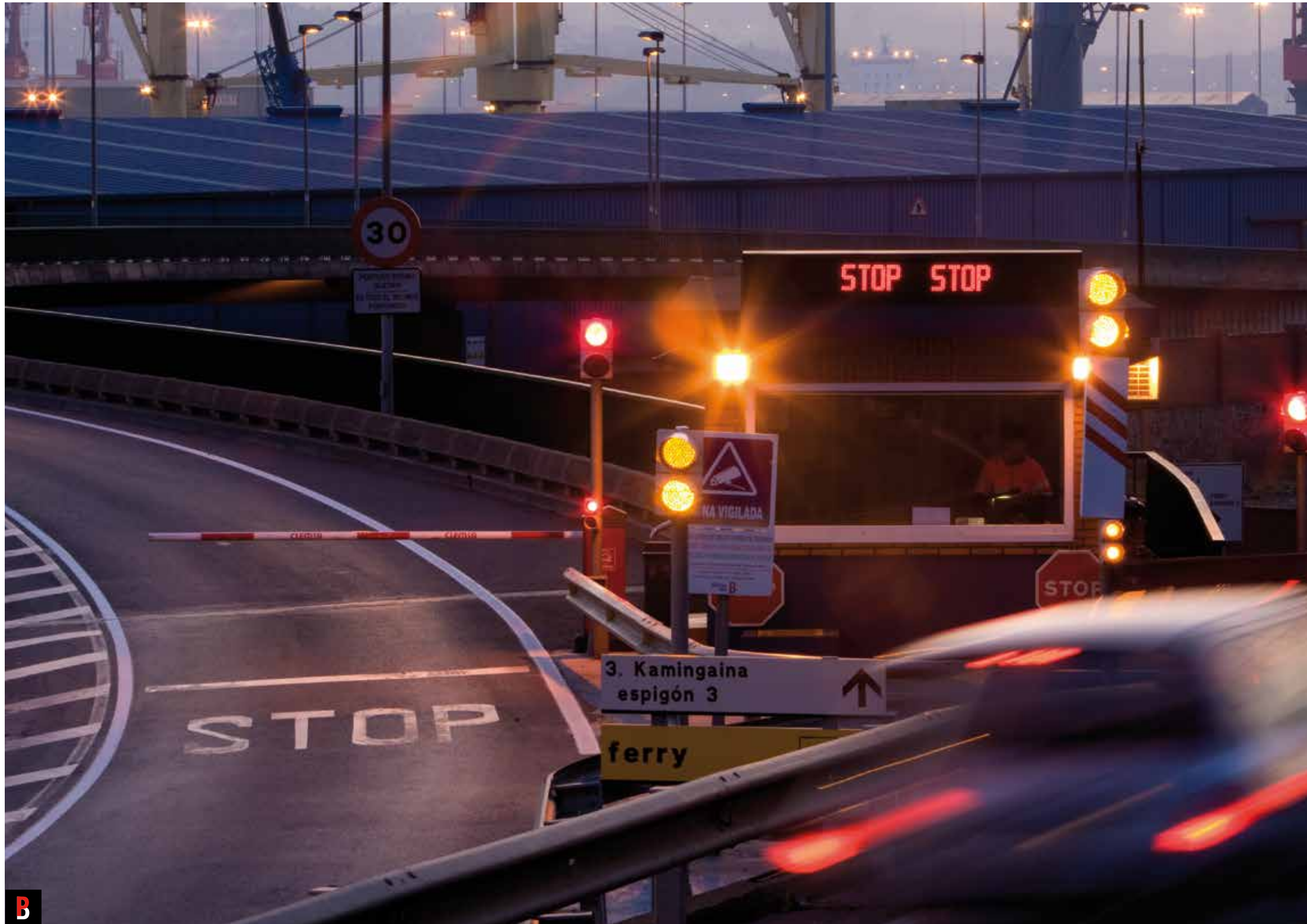
The commitment of the Port of Bilbao to innovation as a driver of competitiveness and economic activity has made it one of the most influential core ports.

The port handles all kinds of goods and vessels and is open and operational 24/7/365, with no problems related to draft or tides.

### DISTANCES BETWEEN THE PORT OF BILBAO AND OTHER PORTS AROUND THE WORLD

Algeciras	867 miles
Antwerp	787 miles
Amsterdam	800 miles
Bremerhaven	1,015 miles
Bristol	555 miles
Buenos Aires	5,900 miles
Bordeaux	230 miles
Casablanca	907 miles
Copenhagen	1,328 miles
Dover	620 miles
Durban	8,840 miles
Dublin	625 miles
Emden	936 miles
Istanbul	2,640 miles
Felixstowe	702 miles
Ghent	750 miles
* Gdynia	1,378 miles
Genoa	1,725 miles
Gothenburg	1,221 miles
Greenock	800 miles
Hamburg	1,015 miles
* Helsinki	1,670 miles
Helsingborg	1,388 miles
Houston	4,900 miles
Las Palmas	1,258 miles
Le Havre	565 miles
Lisbon	586 miles
Liverpool	716 miles
Montreal	3,373 miles
New York	3,175 miles
Oslo	1,292 miles
Poole	763 miles
Portsmouth	573 miles
Rosslare	1,032 miles
Rotterdam	790 miles
* St. Petersburg	1,820 miles
Santos	4,975 miles
Shanghai	10,045 miles
Sines	590 miles
Singapore	7,835 miles
Taranto	2,140 miles
Tilbury	743 miles
Valparaiso	6,817 miles
Veracruz	4,840 miles
Zeebrugge	749 miles

\* Via Kiel.

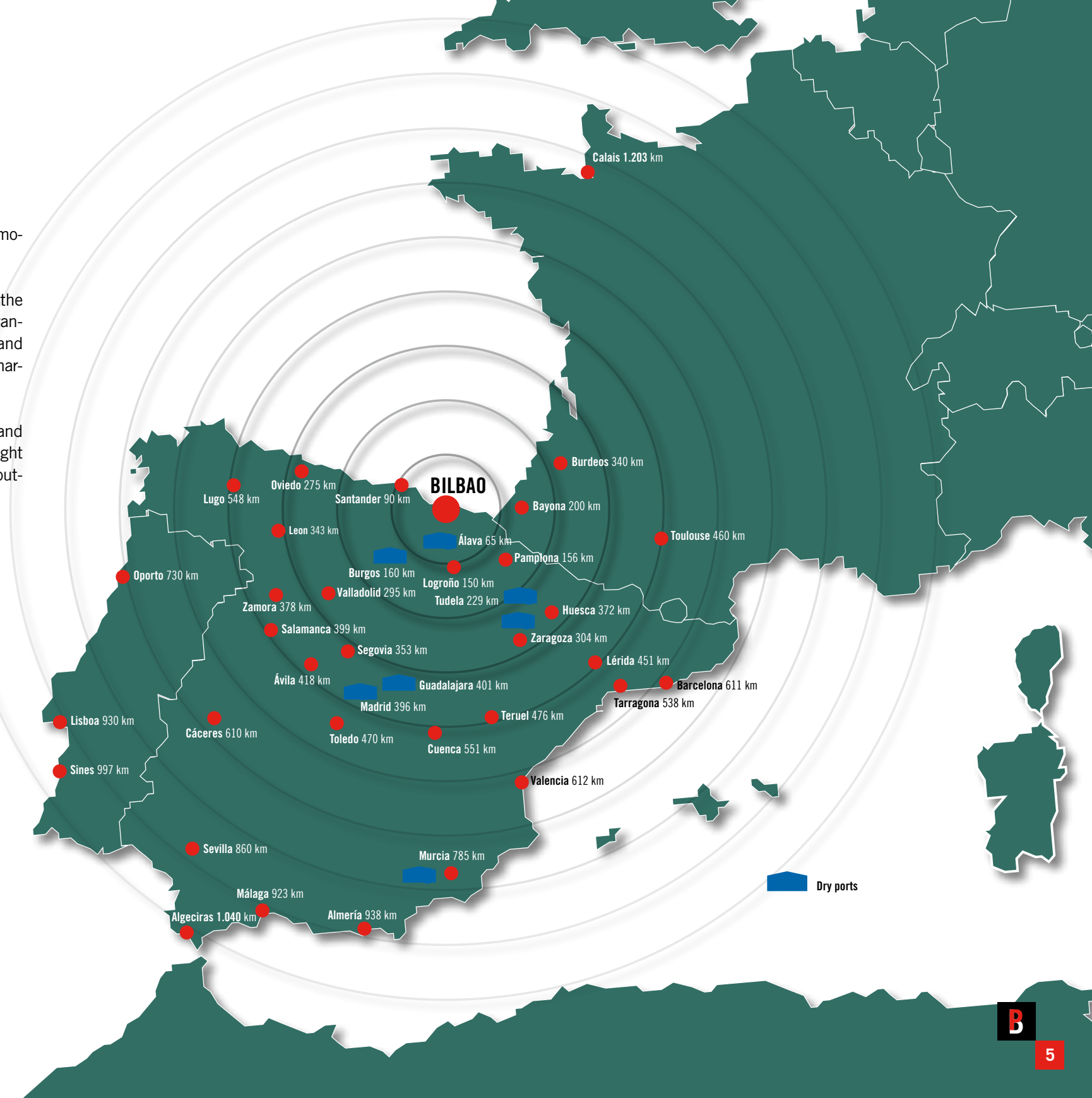


# INTERMODALITY

The Port of Bilbao offers competitive intermodal connections, both by road and rail.

By road, the port is directly connected to the motorway network, offering competitive transit times for the entire Iberian Peninsula and southern France and providing access to a market of over 60 million people.

Additionally, its excellent rail connections and network of dry ports provide the main freight terminals of the Iberian Peninsula with an outlet and access to the sea.



# EXCELLENT CONNECTIONS

## LAND ACCESS

### BY ROAD:

The Port of Bilbao is directly connected to the European motorway network.

#### A-8 MOTORWAY: Bilbao - France and Santander.

Intersection in Eibar-Elgoibar with the Placencia-Vergara-Mondragón road; in San Sebastián with the N-1, Tolosa; in Behobia with the French motorway to Bayonne and Bordeaux.

**A-68 MOTORWAY: Bilbao - Zaragoza.** Intersection in Altube with the Álava dual-carriageway for Foronda Airport (Vitoria) and Vitoria (N-1 and N-240 to Pamplona); in Miranda with the A-1 motorway to Burgos and Madrid; in Alfaro, with the A-15 motorway to Pamplona; in Zaragoza, with the A-2 motorway to Lérida, Tarragona and Barcelona.

### BY RAIL:

The docks are equipped with rail infrastructure to facilitate train-boat intermodality.

#### SPANISH NATIONAL RAILWAY NETWORK.

**Bilbao - Miranda de Ebro line,** which divides into two directions: Burgos - Madrid and Zaragoza.  
**Bilbao Centre - Santurce line.**  
**Barakaldo - San Julián de Muskiz line.**  
**Bilbao - Santander line.**



### DIRECT CONNECTIONS TO THE MAIN TRANSPORT NETWORKS OF EUROPE

All the docks in the Port of Bilbao have direct connections to the main motorway and rail networks of Europe.

# NETWORK OF INTERMODAL SERVICES

The Port of Bilbao offers its customers a network of dry ports to connect to the main logistics areas of Spain.

In addition, the port operators offer weekly rail services to and from Barcelona, Madrid, Guadalajara, Valencia, Castellón, Seville, Murcia, Burgos, Zaragoza and Vitoria.



### DRY PORTS CONNECTED BY THE RAILWAY NETWORK TO THE PORT OF BILBAO

- 1 Azuqueca de Henares (Guadalajara)
- 2 Coslada (Madrid)
- 3 Pancorbo (Burgos)
- 4 Jundiz y Arasur (Álava)
- 5 Plaza (Zaragoza)
- 6 Nonduermas (Murcia)
- 7 Tudela (Navarra)





## RAIL SERVICES AND INTERNAL NETWORK

All terminals are connected to the port's internal rail network, which stretches over 40 km and provides a 24/7/365 shunting service for railway operators.

### ADIF

#### CONTAINER RAIL TERMINAL

Surface area:	51.500 m <sup>2</sup>
Number of tracks:	6 x 450 m
Equipment:	2 gantry cranes

#### CARGO TERMINAL

Surface area:	13.000 m <sup>2</sup>
Number of tracks:	2 x 400 m

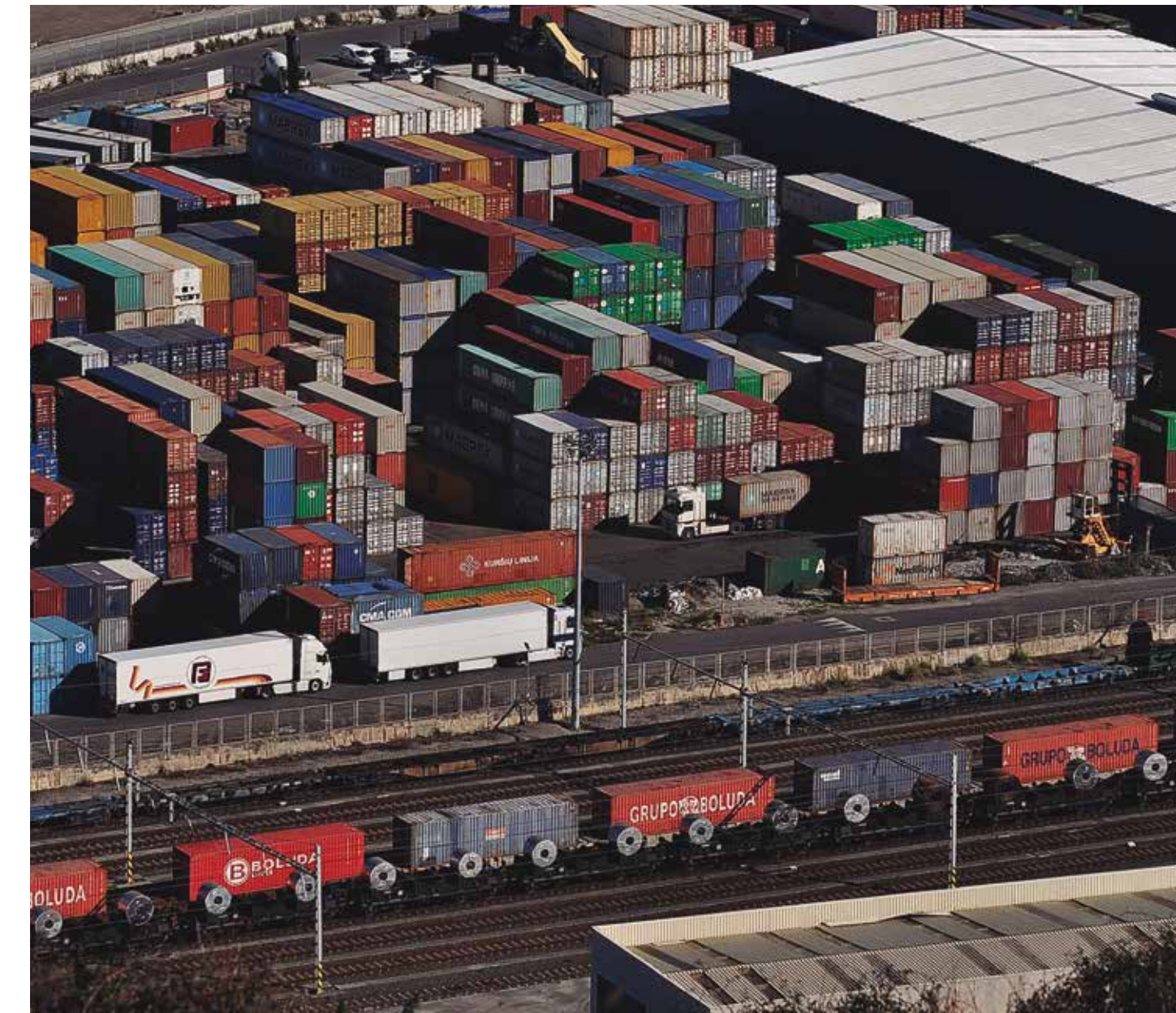
## RAIL SERVICES AND DRY PORT NETWORK

In addition, the Port of Bilbao has a network of dry ports that enables it to receive and dispatch rolling stock to and from areas such as Levante, Madrid, Aragón, Catalonia and Andalusia.

The dry ports of Pancorbo and Arasur also offer business opportunities for logistic-port activities. The Port Authority promotes the railway terminals, which are managed by the company Servicios Intermodales Bilbaoport, S.L., SIBPORT.

### ARASUR

Surface area:	2.000.000 m <sup>2</sup>
---------------	--------------------------



Rail Logistics Terminal	63.440 m <sup>2</sup>
Number of tracks:	4 x 450 m
UIC 54 rail adaptable to international gauge	



# PANCORBO

Surface area: 480.000 m<sup>2</sup>

**Rail Logistics Terminal** 124.795 m<sup>2</sup>

- Rail connection
- Rail connection to handle trains up to 750 m long
- UIC 54 rail adaptable to international gauge
- Goods loading and unloading area and access

- Possible sale or hire of space for logistics and industrial projects.

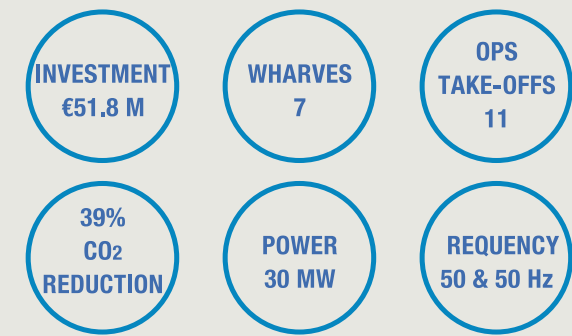


# BUILDING ZERO-EMISSION CORRIDORS

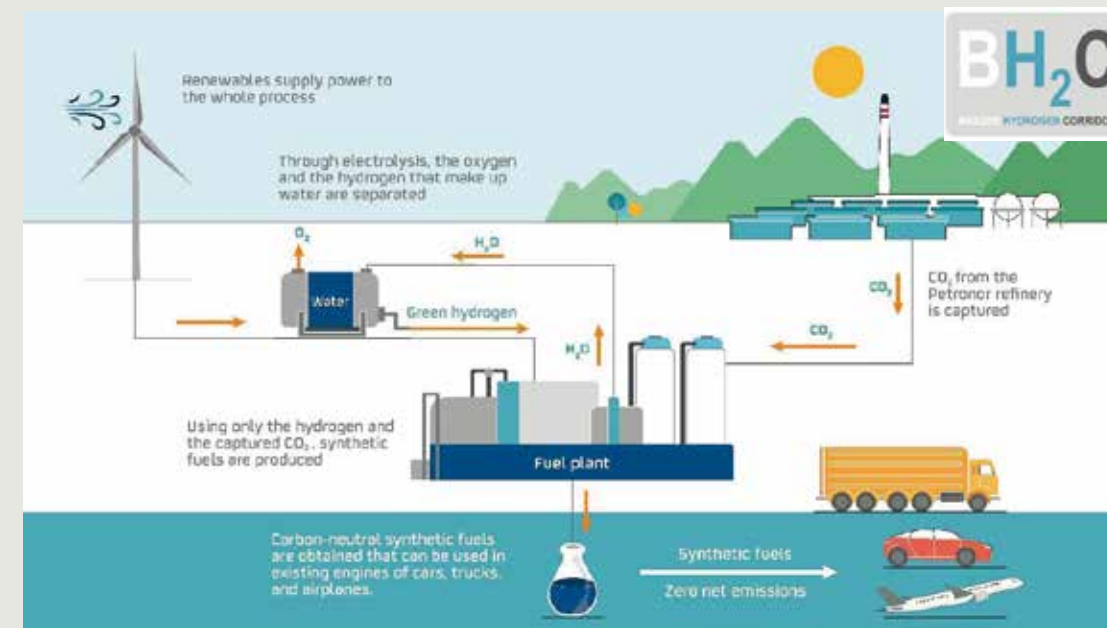
The Port of Bilbao, core port on the Atlantic Corridor, is taking action to reduce the external costs of maritime transport. LNG bunkering services are already available at the port but the goal is to meet the target of a 55% reduction in emissions by 2030 set by the EU. To that end, a public & private investment programme is underway.

The two main projects are the Repsol/Petronor green hydrogen and biogas production plant, and the electrification of the port terminals.

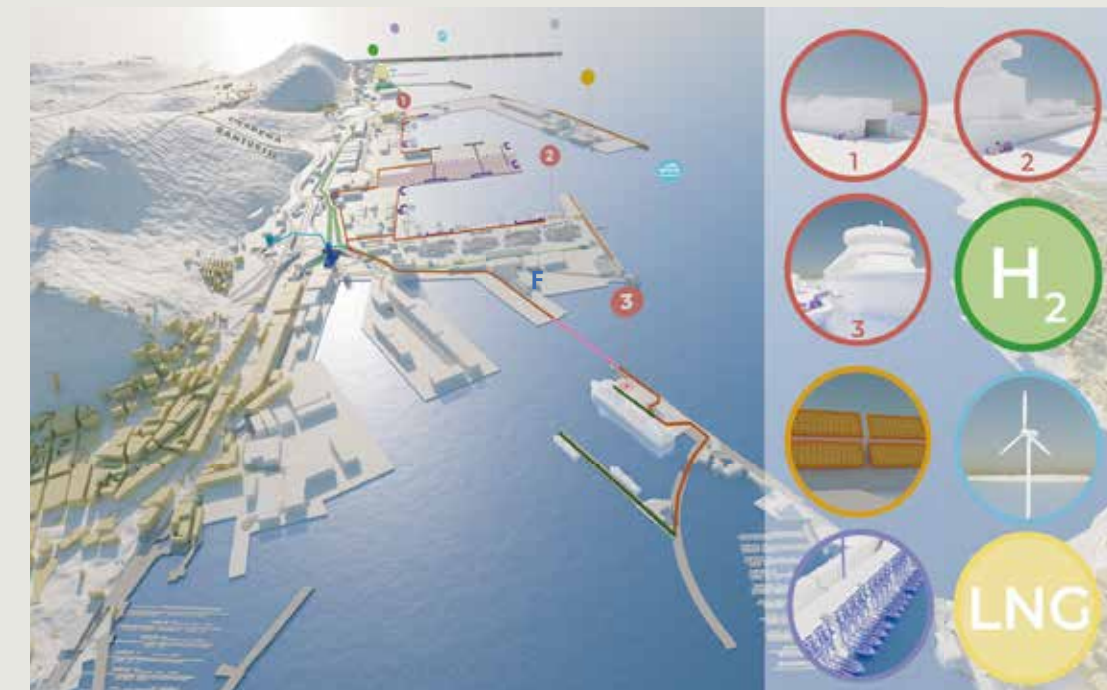
These projects are complementary and will provide shipping companies with a range of options to reduce their CO2 footprint by 2025.



## 2024-DECARBONISATION HUB REPSOL/PETRONOR PLANTS:



## 2025- BilbOPS , ELECTRIFICATION OF THE PORT TERMINALS



# INNOVATION HUB

The Port Authority of Bilbao has set up Bilbao Port Lab, a research and innovation centre designed to identify opportunities in the field of technology for the companies in the port. Bilbao Port Lab provides start-ups and entrepreneurs with a living lab environment to develop projects and prototypes related to logistic efficiency in the operational field, with process digitisation, environmental sustainability, energy efficiency and safety and security.





**OPERATIONS  
AND SERVICES**

WIND HUB  
RIVERSIDE INDUSTRIES AND SHIPYARDS  
COMMERCIAL TERMINALS  
SERVICES





DOCKS AZ2, AZ3, A6,  
VIZCAYA NORTE  
AND AXPE

# WIND HUB



The boom in recent years in industries related to renewable energy has made the Port of Bilbao a reference for the manufacture, logistics and export of wind power components.

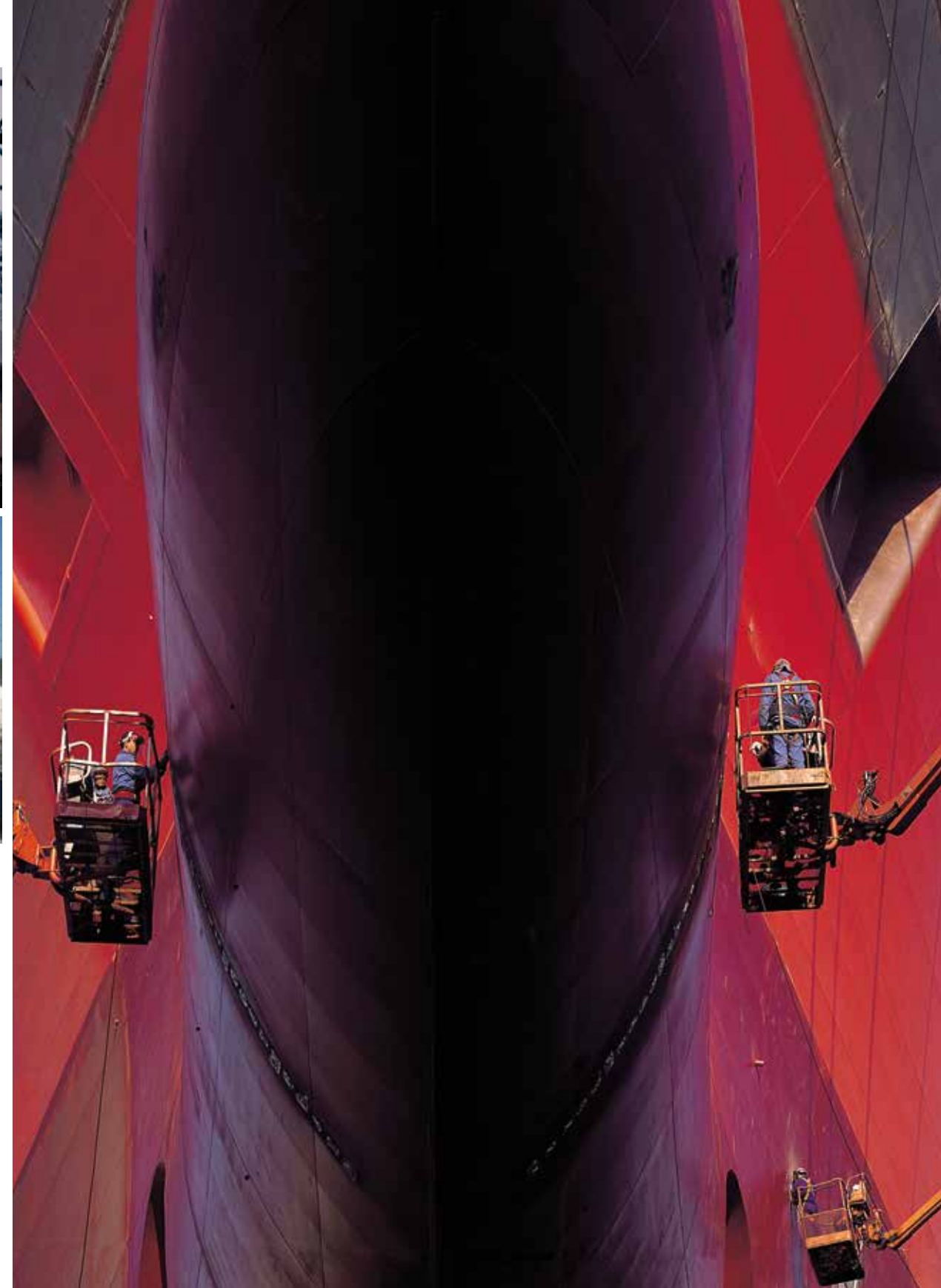
Companies such as Haizea Wind Group, Vicinay Cadenas, Navacel and Lointek all have production plants within the port. Likewise, Siemens Gamesa has a base terminal in the port from which it exports all over the world.



# RIVERSIDE INDUSTRIES AND SHIPYARDS



Since the city was founded, the river has played a key role in the history of Bilbao and the development of its industry. For centuries, large companies linked especially to the iron and steel, naval and chemical sectors have settled on its banks, and project cargo has recently been added to the ranks of these industries.



## SHIPYARDS

Astilleros Zamakona and Astilleros de Murueta, two shipyard companies with an extensive naval tradition, provide global solutions to the needs of the sector, both in shipbuilding and vessel repair. Both companies are a hallmark of quality service and outstanding technical capacity in high-tech innovation, research and development.



# COMMERCIAL TERMINALS



QUAYS: AZ2, AZ3, AXPE, R.V.E,  
VIZCAYA, PRINCIPE ASTURIAS & A6

SPECIALISTS IN  
**BREAK BULK AND HIGH &  
HEAVIES**



Berthing line	5,000 m
Draught	10 - 20 m
Total surface area	730,000 m <sup>2</sup>
Covered storage area	250,000 m <sup>2</sup>

**Equipment**  
Mobile cranes from 104 to 140 tons.

**Main goods**  
Iron and steel, machinery, motor vehicles  
and parts, paper and pulp and heavy lift.



➔ A6, AZ3 AND  
VIZCAYA ESTE DOCKS

## RO-RO

TERMINALS

Berthing line:	1.456 m
Total surface area:	200.000 m <sup>2</sup>
Draft:	20 m
Equipment	4 ro-ro ramps (max. 250 ton load capacity)





# CONTAINER

TERMINAL



DOCKS A1 AND A2



**Berthing line:** 1,300 m

**Draft:** 21 m

**Surface area:** 373,000 m<sup>2</sup>

**Equipment**  
 7 container cranes (32-65 ton capacity)  
 19 gantry (trastainer) cranes (32-42 ton capacity)

**Exclusive-use rail terminal\*** 41,800 m<sup>2</sup>

4 tracks 550 m  
 2 automatic rubber mounted gantry cranes (ARMGs)

\*Rail services from the terminal to the main logistics centres of the Iberian Peninsula

**Access to the terminal\***  
**Automated gates (7 entry and 3 exit)**  
**A gate for special transport vehicles**

\*Automated OCR (Optical Character Recognition) System  
 System for Automatic Location integrated into the crane management system

**Power points for reefer containers: 540 plug-in points**



## WAREHOUSE AND STORAGE AREA



The area of logistic activities, located on land reclaimed from the sea by the Port Authority, has been specifically designed to meet the management and transport needs of its users, with loading bays, access gates at warehouse level, parking areas and offices. Its proximity to the lorry park and the railway terminal makes it particularly accessible.

### WAREHOUSE AND STORAGE AREA

<b>Warehouses:</b>	<b>114,800 m<sup>2</sup></b>
<b>Uncovered surface area:</b>	<b>4,400 m<sup>2</sup></b>
<b>Container depot:</b>	<b>60,000 m<sup>2</sup></b>
<b>Lorry park:</b>	<b>379 parking spaces</b>
<b>Hazardous goods parking area:</b>	<b>230 parking spaces</b>

### Service for reefer containers

### Related services

Filling station, offices, workshops and restaurant



## BONDED WAREHOUSE



**Surface area:** **30,000 m<sup>2</sup>**

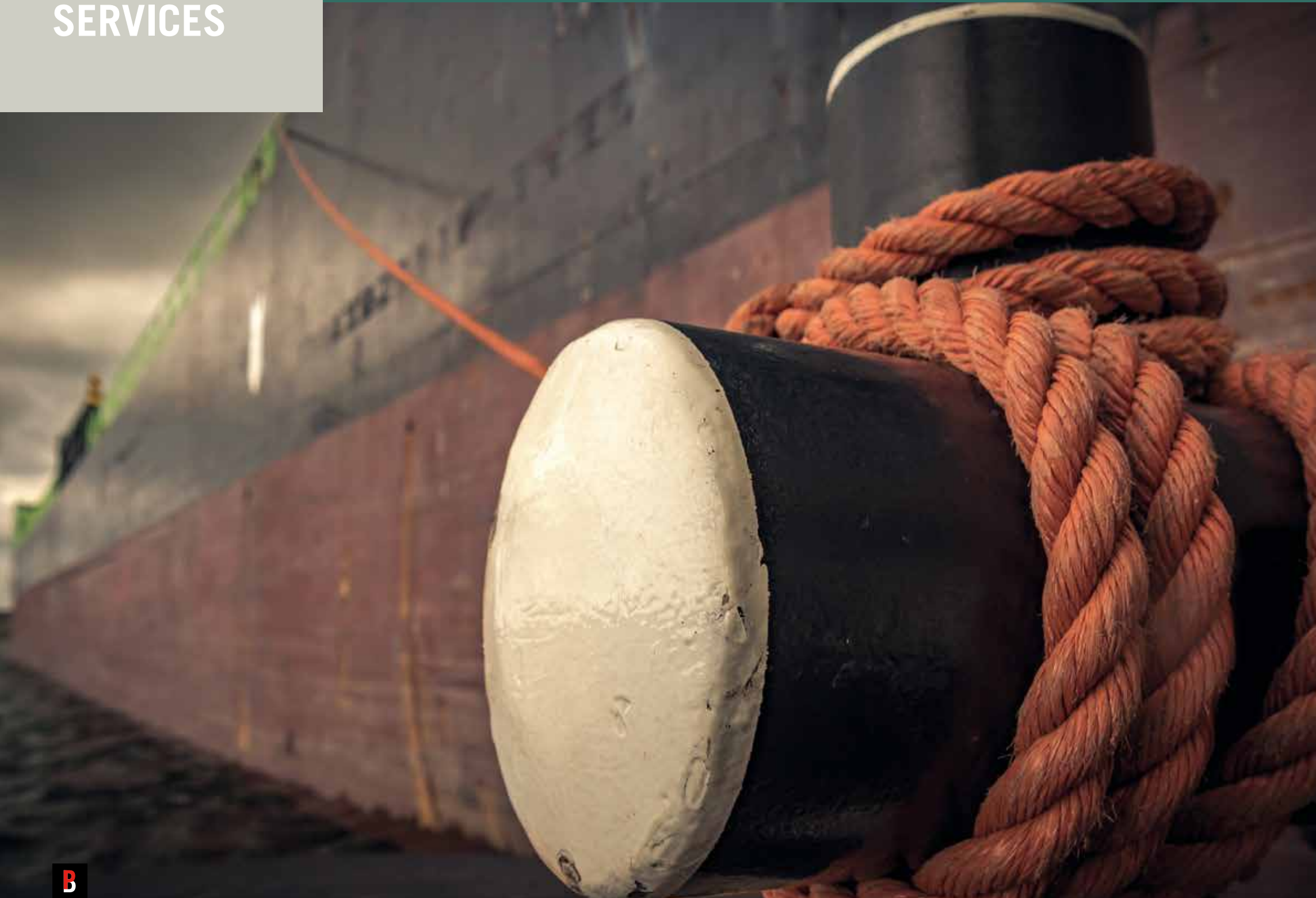
**Covered storage space:** 11 warehouses with a capacity of **34,280 m<sup>3</sup>**

### Equipment

12 1.5-9 ton thermal and electric forklift trucks, hoppers, conveyor belts, loading towers and miscellaneous tools, paper roll clamps, etc.

### Storage

General and food product storage. Storage of non-ferrous metals (aluminium, tin, zinc, copper, nickel and steel) approved by the London Metal Exchange. Bonded warehouse for the storage, handling and sealing of alcoholic beverages and tobacco. Warehousing arrangements other than customs warehousing.



## OPERATIONAL SAFETY

In terms of operational safety, mention must be made of the new Emergency and Protection Centre to address issues of Safety, Security, Health and the Environment.



The Port Authority of Bilbao, in collaboration with the Basque Government Department of Home Affairs and the Spanish Ministry of the Interior, is equipped with a Comprehensive Security System that effectively and efficiently provides for the security needs of the many users of the port.

### IN RELATION TO SECURITY, THE FOLLOWING MEASURES HAVE BEEN IMPLEMENTED:

- ➔ Call-round protection provided by the Port Police, 24/7/365
- ➔ An integrated protection management system
- ➔ Vehicle access control points, with a vehicle and people registration system
- ➔ Port protection plan (RD 1617/2007)
- ➔ Plan for the protection of all port facilities (REG. (EC) 725/2004)
- ➔ Protection Control Centre, equipped with the most advanced human and technical resources



# ELECTRONIC PLATFORM

## FOR:

- CONSIGNEES AND SHIPPING COMPANIES
- TERMINALS
- STEVEDORING COMPANIES
- FORWARDING AGENTS
- CUSTOMS AGENTS

## SOLUTIONS TO SPEED UP OUR CUSTOMERS' OPERATIONS

### e-puertobilbao

Commitment to the use of new technologies in logistics and business processes has been one of the basic premises of the Port of Bilbao strategy plans to improve competitiveness. Today, more than 800 companies use the e-puertobilbao platform, a technology designed to speed up and simplify the processes of document exchange required for the provision of shipping and goods services.

In Short Sea Shipping operations, the electronic one-stop-shop means that, with just one “click”, the vessel’s entry to the port can be managed by the Port Authority, the Merchant Navy and essential services such as pilots, tugboats and moorers. With a second “click”, the entire goods issue can be managed. Furthermore, these operations can be performed from anywhere, with no paperwork involved, and with the added convenience of “online” tracking of vessel and/or goods services.

Other services will be added to the current range available on the platform for end-to-end coverage of the logistics chain, and to provide the shipper with a tool for tracking their goods. The e-puertobilbao platform guarantees excellent coordination of all members of the value chain.



#### SERVICES PROVIDED BY THE E-PUERTOBILBAO ONLINE PLATFORM:

##### PIDE – Integrated Calls Procedure

Management of summary declarations and cargo manifests

Management of hazardous goods port entry and departure

Coordination of the positioning of containers to be inspected at the Border Inspection Post (BIP), Integrated Customs Inspection Centre and scanner inspection

Entry and exit of goods by road transport to/from the Port of Bilbao: Management of advance notice of entry

Export loading lists

Delivery and admittance

Management of Entry Summary Declaration (ENS)

Management of Exit Summary Declaration (EXS)

Cargo manifest from cargo list

Communication of Verified Gross Mass (VGM)

Booking and loading instructions



### PAPER-FREE PORT FOR A FASTER SERVICE



## PORT SERVICES



The Port of Bilbao provides year-round 24/7 pilotage, towage and mooring services.

The Port of Bilbao Authority manages these services and awards concessions for service provision to different companies.

To provide the best possible service, the different facilities and equipment have been spread out over the different areas of the port.

### PILOTAGE

17 pilots

3 boats

Concessionaire: **Corporación de Practicos del Puerto y Ría de Bilbao, S.L.P**



## MARPOL WASTE CONTROL

The Port of Bilbao is equipped with facilities for the reception and treatment of MARPOL waste.

Limpiezas Nervión, S.A, Grupo Tradebe is the company authorized for the collection of waste under Annex I (Types B & C), IV, V and VI.

Tepsa and Acideka terminals are authorized to collect waste generated by their own operations in relation to Annex II, under an agreement with the company FCC Ámbito, S.A.

## BUNKERING SERVICES

Apart from the gas oil supply service, liquified natural gas (LNG) is also provided by fuel truck, ship and an onshore filling station.



The Port of Bilbao is pioneer in the environmental management and is promoting different initiatives aligned to the key areas selected by the port system to contribute to the CO2 and other greenhouse gas objectives of the European Union.

One of them is to promote LNG bunkering services to ships.

### TOWAGE

6 tugs for the outer and inner port, with power ranging from 4,000 to 7,790 HP and a towing capacity (bollard pull) of between 46 and 80 tons.

2 tugs for the river

1 barge to help combat pollution and/or for use in emergency situations at sea.

Concessionaire: **Remolcadores Ibaizabal, S.A.**

### MOORING

8 boats for mooring service

1 barge to help combat pollution and/or for use in emergency situations at sea.

Concessionaire: **Amarradores del Puerto de Bilbao, S.A.**



# STEVEDORING SERVICE



Four stevedoring companies operate in the Port of Bilbao.





# SHIPPING LINES

## DIRECT LINES

LINE	AGENT	PORTS	FREQUENCY
Boluda Lines	Miller y Cía. S.A.	Las Palmas, Sta, Cruz de Tenerife, La Palma, Arrecife, Pto, Rosario, Lisboa	Weekly
Containerships NW UK Service	CMA CGM Ibérica	Dublin, Liverpool, Bristol, Greenock	4 sailings weekly
Containerships SCAN Baltic Service	CMA CGM Ibérica	Tilbury, Helsingborg, Gdynia	Weekly
Containerships SCUUK Service	CMA CGM Ibérica T	Tilbury, Rotterdam	Weekly
COSCO	Vasco Shipping Services, S.L.	Rotterdam, Algeciras y Zeebrugge	2 sailings weekly
DAL - Deutsche Afrika Linien	Romeu y Cía, S.A.	Algeciras	Weekly
Evergreen	Green Ibérica	Rotterdam	Weekly
Finnlines PLC	Consignaciones Toro y Betolaza S.A.	Zeebrugge, Antwerp, Helsinki, Paldiski, St, Petersburg, Kotka, Tilbury, Rostock, Travemunde, Lubeck	Weekly
Grimaldi	Agencia Mtma. Condeminas	Norte Antwerp	Weekly
Hugo Stinnes Linien GmbH	Marmedsa Noatum Shipping Agency	Veracruz, Altamira, Houston, New Orleans	Biweekly
Maersk Line	Maersk Spain, S.L.U.	Algeciras	Weekly
MSC NWC Service	Mediterranean Shipping Co. S.L.U. MSC	Antwerp, Le Havre	Weekly
MSC NWC Service	Mediterranean Shipping Co. S.L.U. MSC	Sines	Weekly
Nirint Shipping, B.V.	Nirint Iberia, S.L.	Mariel, Moa, Willemstad, Barcadera, Santiago de Cuba, Halifax, Rotterdam	Biweekly
SCL-Suardiaz Container Line	Vapores Suardiaz Norte, S.L.	Bristol, Dublin, Greenock, Liverpool	Weekly
WEC Lines	WEC Lines España, S.L.	Moerdijk, Rotterdam, Thamesport	Weekly
WEC Lines - North Spain Canary Service	WEC Lines España, S.L.	Las Palmas, Tenerife, Sines, Casablanca	Weekly
X-Press Container Line BGX	A, Pérez y Cía, S.L.	Rotterdam, Algeciras, Zeebrugge	2 sailings weekly

CONTAINER SHIPPING LINES

SHIPPING LINES

## CONTAINERS CONVENTIONAL GENERAL CARGO

LINE	AGENT	PORTS	FREQUENCY
Barna Conshipping	Bergé M. Bilbao, S.L.	Haifa, Cardiff	Weekly
Barna Conshipping	Servicios Logísticos Portuarios, S.A. – SLP	Haifa, Cardiff	Weekly
BBC Chartering & Logistics - Americana Line	Marmedsa Noatum Shipping Agency	Santos, Río de Janeiro, Porto Alegre, Vitoria, Buenos Aires	Biweekly
BBC Chartering & Logistics - Andino Express Line	Marmedsa Noatum Shipping Agency	Esmeralda, Guayaquil, Callao, Antofagasta, Valparaíso, San Antonio, Galvestone, Jubail	Biweekly
Condor Service Volans /NSC	Berge M. Bilbao, S.L.	Caucedo, Puerto Cabello, Cartagena, Panama Canal, Buenaventura, Guayaquil, Callao, Iquique, Valparaíso, San Antonio, Lirquen, Antofagasta, Río Haina, Manzanillo, Manta, Ilo, San Vicente, Puerto Angamos, Barranquilla	Mensual
Conecta Logistics	Consignaciones Toro y Betolaza, S.A.	Cuxhaven, Esbjerg, Hirtshals, Klaipeda	Biweekly
Daewoo Inter. Corp	Berge M. Bilbao, S.L.	Poliang, Kaohsiung, Gwangyang	Mensual
G2 Ocean	Bergé M. Bilbao, S.L.	Maputo	Biweekly
Hugo Stinnes	Marmedsa Noatum Shipping Agency	Veracruz, Altamira, Houston, New Orleans	Biweekly
Jumbo	Martico, S.L.	Depending on cargo	Depending on cargo
Nirint Shipping, B.V.	Nirint Iberia, S.L.	Mariel, Moa, Willemstad, Barcadera, Santiago de Cuba, Halifax, Rotterdam	Biweekly
Oldendorff Carriers	Bergé M. Bilbao, S.L.	Marmagoa, Paradeep, Santos	Monthly
Onego	Bergé M. Bilbao, S.L.	Houston, New Orleans, Mobile, Savannah, Baltimore, New York, Newark	Monthly
Panocean	Marmedsa Noatum Shipping Agency	Cigading, Gwangyang, Pohang, Kwangyang	Monthly
Sakana	Consignaciones Toro y Betolaza, S.A.	Cuxhaven, Esbjerg	Biweekly
Siemens-Gamesa	Bergé M. Bilbao, S.L.	Depending on cargo	Biweekly
Spliethoff's - America Shuttle	A. Pérez y Cía., S.L.	Tampico, Veracruz,, Houston, New Orleans, San Juan Pto,Rico	25 days
Spliethoff's - Caribbean Shuttle	A. Pérez y Cía., S.L.	Puerto Cabello, Matanzas, Río Haina, Guanta, Willemstad, Point Lisas, Barranquilla	25 days
Spliethoff's - Great Lakes Service	A. Pérez y Cía., S.L.	Valleyfield, Hamilton, Cleveland	Monthly

## RO-RO LINES

LINE	AGENT	PORTS	FREQUENCY
Brittany Ferries	Bergé M. Bilbao, S.L.	Portsmouth	2 sailings weekly
Brittany Ferries	Bergé M. Bilbao, S.L.	Poole	2 sailings weekl
Brittany Ferries	Bergé M. Bilbao, S.L.	Rosslare	2 sailings weekl
Finnlines PLC	Consignaciones Toro y Betolaza, S.A.	Zeebrugge, Antwerp, Helsinki, Paldiski, St, Petersburg, Kotka, Tilbury, Rostock, Travemunde, Lubeck	Weekly
NWUK Fast Lane	CMA CGM Ibérica	Poole	2 sailings weekly

# MAP OF THE PORT OF BILBAO

## INDUSTRIAL TERMINALS

### PUNTA LUCERO AREA AND CEBALLOS JETTY

- Acideka, S. A.
- Bahía Bizkaia Gas, S.L.
- Exolum
- Esergui, S.A.
- Petróleos del Norte, S.A. - Petronor
- Terminales Portuarias, S.L. - TEPSA

### PUNTA SOLLANA DOCK

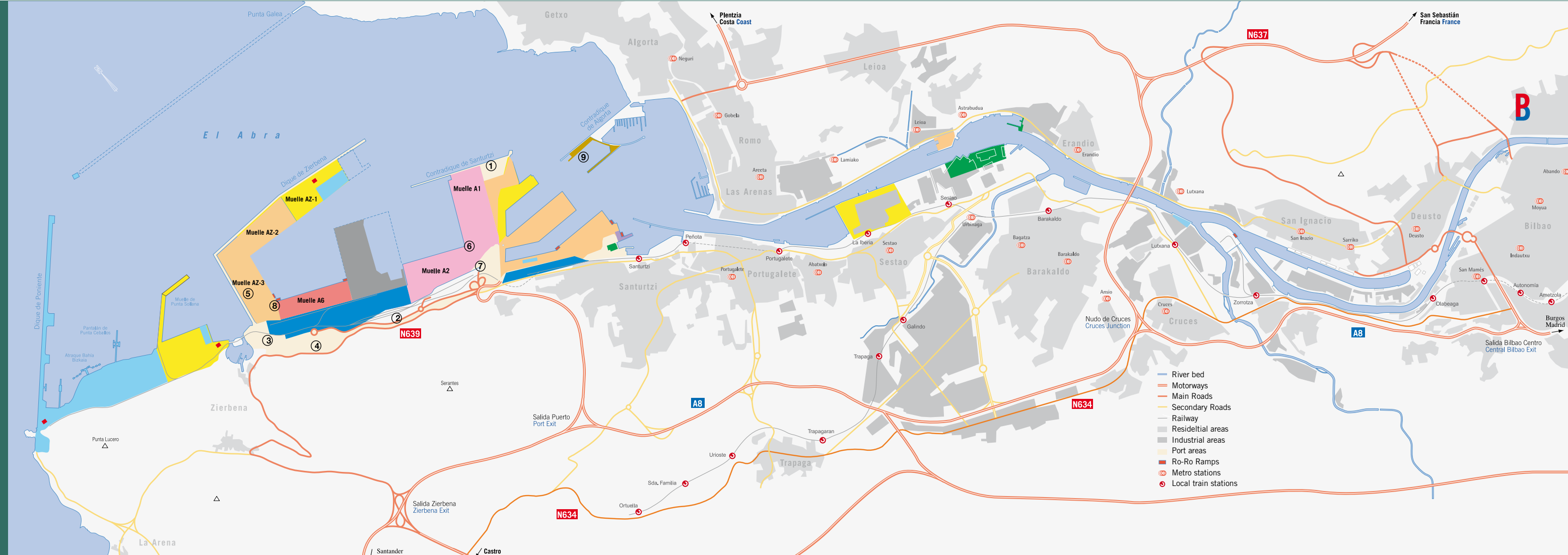
- Atlántica de Graneles y Moliendas, S.A.
- ASK Chemicals
- Exolum
- Bunge Ibérica, S.A.
- DBA Bilbao Port
- Toro y Betolaza, S.A.

### ZIERBENA AND SANTURTZI DOCKS

- Astilleros Zamakona, S.A.
- Befesa Valorización de Azufre
- Weylchem Bilbao
- Exolum
- Depósitos Portuarios S.A.
- Haizea Bilbao
- Lointek
- Saisa Port
- Siemens Gamesa

### RIVERSIDE DOCKS

- ArcelorMittal
- Astilleros Murueta
- Bilbaina de Alquitranes, S.A.
- Navacel Internacional, S.A.
- Vicinay Sestao



## COMMERCIAL TERMINALS

### CARGO OPERATORS

- Bergé Marítima Bilbao, S.L.
- CSP Iberian
- Consignaciones Toro y Betolaza, S.A.
- Servicios Logísticos Portuarios, S.A. - SLP

### WAREHOUSES AND DEPOTS

- Access World
- Frioport Bilbao
- Bonded Warehouse
- Cronimet
- WAREHOUSE AND STORAGE AREA: Aceros LST Bilbao, Bilogistik, Decoexsa, S.A., E. Erhardt Transitarios - Ertransit, Ecoquímica Logística Integral, S.L., Exportian Terminal, S.L., Logística Binaria, S.L., Pasaje Azul, S.A. (EUROCOYAL), Progeco Bilbao, S.A., Reconsa Logística, S.L., Rhenus Logistics, S.A.U., Sergusa, Stokia XXI, S.L., XPO Logisitcs, Zierbena Bizkaia 2002, A.I.E.

### WASTE RECEPTION AND TREATMENT

- Linersa
- FCC Ámbito
- CESPA Gestión de Residuos

### OTHER FACILITIES

- 1 Border Control Post
- 2 ADIF Rail Terminal
- 3 APARKABISA lorry park
- 4 APARKABISA hazardous goods lorry park
- 5 Container repair
- 6 Scanner and radioactivity monitoring
- 7 Medical services
- PASSENGER TERMINALS
- 8 Brittany Ferries
- 9 Cruceros

- Bulk liquids
- Bulk solids
- Containers
- Conventional Cargo
- Ro-Ro Terminal
- Cruise ships
- Warehouses and Storage
- Shipyards
- Central Quay





**Bilbao**  
**PORT** **B**

[www.bilbaoport.eus](http://www.bilbaoport.eus)